



PDA HANDHELD

Field PDA Handheld Devices

The Field PDA Handhelds provide a cost-effective and convenient method for interfacing with M1 and M2-series radios. The Field PDAs, available in a standard and environmentally-hardened versions, provide programming, reading, diagnostic and datalogging functions.

Field PDA Features

- Environmental unit is waterproof and dustproof for field applications
- Standard unit for warehouse and shop work
- Easy data transfer options for datalogging files
- Auto and office AC-power chargers
- Data and application backup through removeable flash memory card
- IrDA port for local reading, configuration and datalogging
- Simple touchscreen-based operations for all functions
- Cost effective solution for typical maintenance, installation and customer service personnel
- Read-only and datalogging versions for end customers

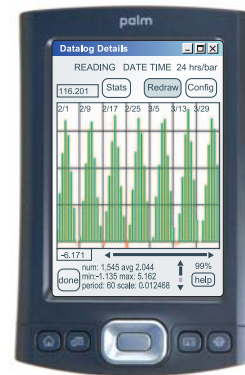
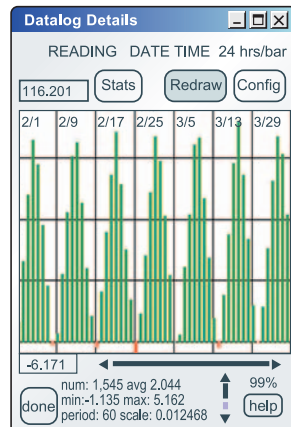
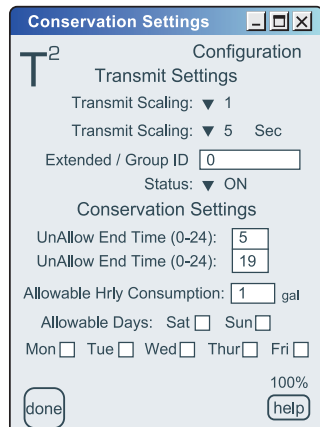
Software Functions Include:

T2 Radio:

- M1/M2 Reading
- M1/M2 Configuration
- M1/M2 Datalogging
- One-Step Configuration

MF-MIU:

- MIU Reading
- MIU Configuration
- MIU Calibration
- Datalogging



Standard



Environmental

Environmental Unit

- Model: Aceeca Meazura™ 1000
- Dimensions: 3.7W x 6.7H x 1.5D in
95W x 170H x 38D mm
- Weight: ~ 1 lb
- Screen: 2.2W x 2.0H inches
B/W touchscreen w/backlite
- Environmental: IP67 rated
- Temperature: 32°F to 122°F
0°C to 50°C
- Battery: Lithium-Ion (R-C)
- Operating System: Palm OS 4.1
- Backup: CompactFlash module

Standard Unit

- Model: Palm T/X©
- Dimensions: 3.0W x 4.8H x 0.6D in
76W x 122H x 16D mm
- Weight: ~ 1/2 lb
- Screen: 2.2W x 3.25H in
Touchscreen w/backlite
- Battery: Lithium (R-C)
- Operating System: Palm OS Garnet 5.4
- Backup: SD, MMC or SDIO